



International Distributors of Electronics for Medicine, Inc.

PO BOX 304, Benicia, CA 94510 USA

Phone: 707-746-8597 Fax: 707-746-6374

Email: info@idem.cc Website: www.idem.cc

ACCESSORIES LIST

I.D.E.M. IS AN AUTHORIZED TITMUS VISION SCREENER REPAIR CENTER.
CONTACT US AT [INFO@IDEM.CC](mailto:info@idem.cc) OR 707-746-8597 FOR MORE INFORMATION

▪ AUDIOMETRIC PARTS, CABLES & ACCESSORIES	2
▪ EARTIPS	3
▪ EARPHONE CUSHIONS	4
▪ BONE CONDUCTION COMPONENTS	4
▪ AMPLIVOX AUDIOCUPS & SPARE PARTS	4
▪ INSERT EARPHONES, PARTS & SUPPLIES	5
▪ MASKS	5
▪ SCREWS	6
▪ WRENCHES	6
▪ ALUMINUM FOLDING WHEELCHAIR RAMPS	6
▪ WASHERS & JACKS, SCREWDRIVER SETS	7
▪ POWER SUPPLIES	7
▪ TITMUS VISION TESTER ACCESSORIES	7
▪ SEIKO DPU414 PRINTER CABLES	8
▪ PRINTER PAPER	8

MINIMUM ORDER \$50

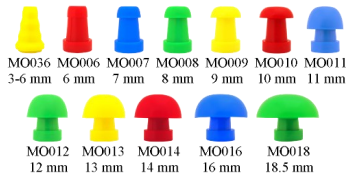
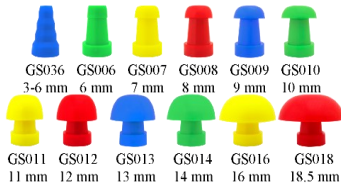
PLEASE EMAIL ORDERS TO: info@idem.cc OR FAX TO 1-707-746-6374

AUDIOMETRIC PARTS, CABLES & ACCESSORIES

PART #	DESCRIPTION
 S100101 L100101	SMALL HEADPHONE CUSHION COVERS (250/BX) LARGE HEADPHONE CUSHION COVERS (250/BX)
 RE-7	RE-7 HEADBAND W/ CLASP REINFORCEMENT
 TDH-39	TELEPHONICS PHONES - 10 OHM IMPEDANCE
 New! KM6S	STRAIGHT PLUG PATIENT RESPONSE SWITCH WITH RED BUTTON - 6 FT
 New! KM6A	RIGHT ANGLE PATIENT RESPONSE SWITCH WITH RED BUTTON - 6 FT
 IEC-M2	DUAL MONO HEADSET CABLE (2 1/4" RIGHT ANGLE GOLD PLATED PHONE PLUGS) (84" LENGTH)
 M745TL	STEREO HEADSET CABLE (84" LENGTH, TIP LEFT)
 CF-600M	PREMIUM 3' JUMP CORD, GOLD PLUG - MONO
 CF-600SA	PREMIUM 3' JUMP CORD, GOLD PLUG - STEREO
 IA-PS-1236	AUDIOMETER ADAPTER (12 VDC 500 MA - SWITCHING TYPE) INPUT: 100-240V; 50-60Hz OUTPUT; 12VDC 500 mA; 6' CORD WITH 2.1mm COAX POWER PLUG, CENTER POSITIVE
 0615ME	RESPONSE CABLE FOR QUEST BIO-ACOUSTIC SIMULATOR BA-202/BA-202-25 (COMPLETE)
 8908866	LAVALIER CLIP FOR LAPEL MICROPHONE

NOTE: AS OF OCTOBER 2024, TELEPHONICS TDH-50P PHONES HAVE BEEN DISCONTINUED BY THE MANUFACTURER

EARTIPS



PART #	DESCRIPTION
KR004 TO KR014, KR016	SINGLE USE EARTIPS—COMPATIBLE WITH AMPLIVOX OTOWAVE W/ WHITE PROBE TIP, WELCH ALLYN 262 & 39500 OAE SCREENERS, & MANY MAICO & INTERACOUSTICS INSTRUMENTS (SELECT SPECIFIC SIZE)
TS211	EARTIP KIT—FOR KR SERIES 120 ASSORTED (10 of Each Size)
TS212	EARTIP KIT—FOR KR SERIES 300 ASSORTED (25 of Each Size)
GS036, GS006 TO GS014, GS016, GS018	SINGLE USE EARTIPS—COMPATIBLE WITH MANY INVENTIS BRAND INSTRUMENTS, GRASON STADLER TYMPSTAR & MANY OTHER GRASON STADLER BRAND INSTRUMENTS (SELECT SPECIFIC SIZE)
MO036, MO006 TO MO014, MO016, MO018	SINGLE USE EARTIPS—COMPATIBLE WITH MANY MADSEN OTOMETRICS BRAND INSTRUMENTS (SELECT SPECIFIC SIZE)
IA036, IA006 TO IA014, IA016, IA018	SINGLE USE EARTIPS—COMPATIBLE WITH GRASON TYMPSTAR PRO, AMPLIVOX OTOWAVE W/ CLEAR PROBE TIP, MADSEN ZODIAC & ACCUSCREEN (SELECT SPECIFIC SIZE)
TS291	EARTIP KIT—FOR IA SERIES 120 ASSORTED (10 of Each Size)
TS290	EARTIP KIT—FOR IA SERIES 300 ASSORTED (25 of Each Size)
8102681	BIO-LOGIC AUDX / NATUS OAE FOAM EARTIPS-ADULT
8102682	BIO-LOGIC AUDX / NATUS OAE FOAM EARTIPS-PEDIATRICS
8103123	BIO-LOGIC AUDX / NATUS OAE FOAM EARTIPS-JUMBO

Visit our website or email us for a complete eartip fitment guide

EARPHONE CUSHIONS



PART #	DESCRIPTION
IEC054RB	RED & BLUE SOFT THERMOPLASTIC ELASTOMER EARPHONE CUSHION (LATEX FREE)
IECO51	BLACK SOFT THERMOPLASTIC ELASTOMER EARPHONE CUSHION (LATEX FREE)

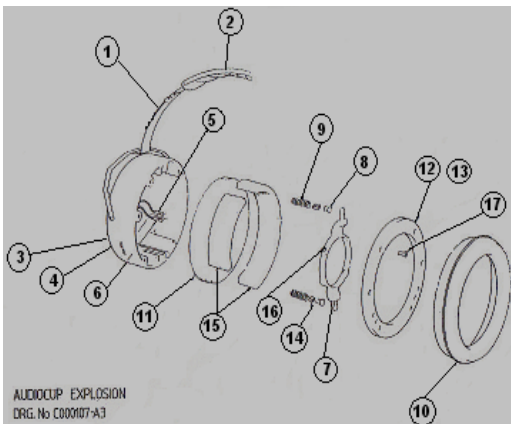
BONE CONDUCTION COMPONENTS



PART #	DESCRIPTION
RE-P3333	HEADBAND FOR B-71 & B-72
RE-B-71-10	AUDIO TRANSDUCER/BONE OSCILLATOR FOR AUDIOMETRIC TESTING, 10 OHM
RE-B-71-50	AUDIO TRANSDUCER/BONE OSCILLATOR FOR AUDIOMETRIC TESTING, 50 OHM
RE-P-3084	P3084 - MOLDED CORD FOR B81/B71 3.1 STRAIGHT PLUG GREY
191204G	BONE CORD FOR BONE OSCILLATOR—GOLD PLATED RIGHT ANGLE, 2 PRONG <i>*While Supplies Last!*</i>
RE-3288-1	REPLACEMENT PADS FOR BONE HEADBAND (10/BAG)

AMPLIVOX AUDIOCUPS & SPARE PARTS

NOISE REDUCING EARPHONE ENCLOSURES



ITEM #	PART #	AUDIOCUP SPARE PARTS—DESCRIPTION
1	1047	HEADBAND
2	1048	HEADBAND COVER
5, 6	1039	LEAD ASSEMBLY-BLACK
10	1042	EAR CUSHION
11, 15	1206	FOAM MALTESE CROSS
Complete Assembly	2194	AMPLIVOX AUDIOCUP COMPLETE ASSEMBLY ASK ABOUT OUR SALE ON COMPLETE ASSEMBLIES!

SALE!

AMPLIVOX AUDIOCUP
COMPLETE ASSEMBLY



INSERT EARPHONES, PARTS & SUPPLIES

INSERT EARPHONES



PART #	DESCRIPTION (Specify 10 OHM or 50 OHM when ordering)
ER3C10	ER3C INSERT EARPHONES (10 OHM)
ER3C50	ER3C INSERT EARPHONES (50 OHM)
IP30-10	IP30-10 INSERT EARPHONE 10 OHM, 30" PLUG, 2M CABLE
IP30-50	IP30-50 INSERT EARPHONE 50 OHM 30° PLUG, 2M CABLE

PARTS & SUPPLIES FOR INSERT EARPHONES



PART #	DESCRIPTION
ER3-05	HOOK-AND-LOOP VELCRO CLIPS (6/BAG)
420-2028	JUMBO FOAM EARTIPS (24/PKG)
420-2004	ADULT FOAM EARTIPS (50/BAG)
420-2005	ADULT FOAM EARTIPS (750/BULK)
420-2006	PEDIATRIC FOAM EARTIPS (50/BAG)
420-2007	PEDIATRIC FOAM EARTIPS (750/BULK)
8507327	REPLACEMENT SOUND TUBES (INCLUDES TUBE NIPPLES) (2/SET)
8507332	REPLACEMENT TUBE NIPPLES (10/BAG)
ER3C84	REPLACEMENT DUAL MONO CABLE FOR ER3C, 84" LENGTH, 1/4" PLUGS
8107179	3A REPLACEMENT-10 OHM & 50 OHM ASSEMBLY CABLE, IP30 INSERT EARPHONE CABLE

FACE MASKS



PART #	DESCRIPTION
KN95	KN95 DISPOSABLE MASK (50/PKG)
FM001-BLUE-OS	DISPOSABLE FACE MASK (BLUE - 3/PLY - EAR LOOP) (50/PKG)
FM016-BLUE-OS	DISPOSABLE FACE MASK (BLUE - SURGICAL - 3/PLY) (50/PKG)

SCREWS



PART #	DESCRIPTION
JF-2C15K	*TELEPHONICS HEADPHONE TDH39 SCREWS (100/BAG)
6012KSY	**1/4" 6/32 CUP POINT SCREW (FOR TITMUS T2A/T2S VISION TESTERS) (10/ BAG)
4KKCS	4 X 5MM SOCKET SET CUP SCREW (AMBCO) (10/ BAG)
3KKCS	3 X 4MM SOCKET SET CUP SCREW (IA DD45) (10/BAG)

The wrenches for the screws above are indicated below

WRENCHES

PART #	WRENCH DESCRIPTION	END VIEW
S0484	*BRISTOL WRENCH SPLINE 4 FOR MAICO TDH39 SCREWS	
509002	*BRISTOL HEX WRENCH .035" X 1.00" FOR BENSON TDH39 SCREWS	
S0486	*BRISTOL WRENCH SPLINE 6 FOR TREMETRICS TDH39 SCREWS	
6YRASY	** 1/16 #6 ALLEN HEX WRENCH FOR TITMUS T2A/T2S PULLEY	
41250	1.55MM WRENCH FOR AMBCO HEADPHONES	
312148	.89MM WRENCH FOR INTERACOUSTICS DD45 HEADPHONES	
102296SM	WRENCH ASSORTMENT BUNDLE (INCLUDES ONE EACH OF THE ABOVE)	

* It is recommended that screws for the TDH39 Headsets are replaced with Part # JF-2C15K . Wrenches to remove the various models are indicated as described—DON'T BE STUCK WITHOUT ONE DURING YOUR SALES OR SERVICE CALL!

** It is recommended that the screws for the Titmus T2A/T2S be removed and replaced with Part #6012KSY using wrench Part #6YRASY.

ALUMINUM FOLDING WHEELCHAIR RAMPS

Singlefold Ramp



PART #	LENGTH	WIDTH	FOLDED SIZE	WEIGHT	CAPACITY
SFW330	3 FT	30 IN	36"x16"x4"	15 lbs.	600 lbs.*
SFW430	4 FT	30 IN	48"x16"x4"	20 lbs.	600 lbs.*
SFW530	5 FT	30 IN	60"x16"x4"	24 lbs.	600 lbs.*

*Maximum Ramp Capacity: Single Axle—300 lbs., Double Axle—600 lbs.

RAMPS CAN BE REINFORCED FOR EXTRA WEIGHT FOR AN ADDITIONAL \$70.00

(Allow 5 extra days for delivery)

WASHERS & JACKS



COLOR OF WASHER	GRAY	WHITE	BLUE	YELLOW	GREEN	RED	BLACK
PART #	1422	1423	1424	1425	1428	1430	1432
MINIMUM ORDER QUANTITY: \$25							

GREAT FOR SOUND ROOMS!



PART #	DESCRIPTION
FC679311	STEREO, INSULATED JACK WITH GOLD, REAR CONTACTS HORIZONTAL MOUNT (INCLUDES 1 GOLD WASHER AND 1 HEX NUT)
JESJR	GOLD PLATED JACK REPLACEMENT ASSEMBLY KIT (4 SETS—INCLUDES 8 COLORED WASHERS AND 8 HEX NUTS) CAN ALSO BE DESIGNED FOR 6, 8, OR 12 SETS—CALL FOR PRICING

SCREWDRIVER SETS



PART #	DESCRIPTION
2041	6 PIECE PRECISION SCREWDRIVER SET

SIZES INCLUDE: \oplus #0, #1 \ominus 1.4 mm, 2.0 mm, 2.4 mm, 3.0 mm

POWER SUPPLIES



PART #	DESCRIPTION
14294	TITMUS T2A/T2S MEDICAL GRADE PLUG/POWER SUPPLY (RIGHT ANGLE FEMALE PLUG)
17993	TITMUS iSERIES AND VSERIES 120 VOLT POWER SUPPLY
2389-LW	3-SLOT LAPTOP POWER CORD FOR INTERACOUSTICS/MAICO & OTHERS (NEMA 5-15P TO IEC320C5)

TITMUS VISION TESTER ACCESSORIES



PART #	DESCRIPTION
17517	TITMUS iSERIES CONTROL PANEL CORD, DIN CONNECTOR, LENGTH 0.8 METERS
35340	TITMUS BULBS FOR T2A/T2S MODELS (2/PKG)
19070	TITMUS VSERIES CONTROL PANEL CORD, LENGTH .93 METERS

We have an assortment of slides for the iSeries and VSeries vision screeners, as well as some spare parts and accessories for the older vision screeners (T2A & T2S models) at a reduced price.

Please call us at 707-746-8597 for more details.

SEIKO DPU414 PRINTER CABLES

(Specify instrument to be used with printer when ordering)



PART #	DESCRIPTION
DP-30D	TREMTRICS RA300 PRINTER CABLE
DP-30E	MICRO AUDIOMETRICS EARSCAN PRINTER CABLE

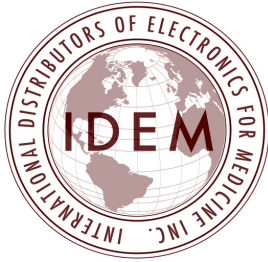
PRINTER PAPER



We carry printer paper for a variety of different audiometers, breath alcohol testers, spirometers, and body mass index scales. *Don't see the paper you are looking for? Call us and we might have it!*

PART #	WIDTH	PAPER FOR THE FOLLOWING INSTRUMENTS:
030711	57 mm OR 2 1/4"	CMI INTOXILYZER 240/240D • TITAN • OTOWAVE
015062	57 mm OR 2 1/4"	3-PART BAT PRINTER PAPER CMI INTOXILYZER 200/200D, 400/400PA
78498-9008	57 mm OR 2 1/4"	BENSON NEXT • CMI 8000 / 400 (NEW MYLOX PRINTER) • GRASON STADLER GSI-37 • INTER-ACOUSTICS OTOREAD • MAICO EROSCAN • SEIKO DPU21/MYP201,STP211 • TREMETRICS RA500 • WELCH ALLYN MICROTYP
TP411-451	111 mm OR 4 3/8"	AMBCO 2500 • FONIX 7000 • INTERACOUSTICS AC40/AT235/AT235t/AA222 INVENTIS INSTRUMENTS • MAICO 34 ("04")/ RACE CAR SEIKO DPU411/DPU414/43/51/52/TP5000-112 • SPIROMETRICS FLOW MATE • WELCH ALLYN MICRO TYMP2/TM262/OAE29200 TREMTRICS RA 800 • SMART TONE
89167	109 mm OR 4 3/7"	AMERICAN ELECTROMEDICS AE105/106/205/206/207/208 • GRASON STADLER GSI-33 / GSI-38 (4 1/2"), 70/AUDIOPATH 2000 I & II/GSI TYMPSTAR INTERACOUSTICS AZ26/AT22t • MADSEN ORBITOR 922 V2/174/2020/ ZODIAC 901 • WELCH ALLYN TM262
79225	63 mm OR 2 1/2"	MAICO MA-630 / 640 / 728 / 790 / 800 / 1000, MI34
74310	80 mm OR 3 1/8"	AMBCO 1500 • FONIX FP35 • GRASON STADLER GSI 38 (3 1/8" WIDE) • INTERACOUSTICS MTP10 • SEIKO MTP401/STP312 • TREMETRICS HT WIZARD

ORDERING AND SHIPPING POLICIES



International Distributors of Electronics for Medicine, Inc.

PO BOX 304, Benicia, CA 94510 USA

Phone: 707-746-8597 Fax: 707-746-6374

Email: info@idem.cc Website: www.idem.cc

IDEM is located in historical Benicia, California in the San Francisco Bay Area. We have been providing quality medical equipment and service to the government, military institutions, and medical distributors in the U.S.A. and beyond for over 30 years. Our products include, but are not limited to, audiometers, spirometers, breath alcohol testers, sound level meters, noise dosimeters, otoscopes, vision screeners, sound rooms, and wheelchair ramps, along with the parts and supplies. Our experienced technicians are available during business hours to answer any questions or troubleshoot issues with any of our products. If you need an item not found in our catalog, please contact us and we may be able to get it for you. If you or your customer requires calibration services, please contact our sister company, MEDI, at 707-746-6334. MEDI has been associated with the medical industry for over 65 years and services the occupational, clinical, industrial and school health sectors.

To Order:

Orders can be submitted by emailing your Purchase Order to info@idem.cc or faxing it to 707-746-6374. Please be sure your PO includes your company name and contact info, purchase order number, ship-to address, preferred shipping method and shipper account number (if applicable), size and quantity of items to be ordered, name and signature. Please also include your fax number or email for a return confirmation.

Payment Methods:

We accept payment by check, wire/bank transfer and most major credit cards. After your order has been submitted, you will receive an invoice with payment instructions. New customers must submit payment before the first order can be shipped. Established customers are on NET 20 terms. USD only. Note: If wire payment is chosen, a wire fee may apply and is determined by the bank and varies by customer location.

Shipping and Returns Policies:

IDEM ships via UPS by default. FedEx, US Postal Service, and DHL may be requested (pick-up fee may apply). Customer may provide their own shipper account number to have all shipping charges billed direct (handling fee may apply). Customer pays for all shipping fees, including all customs duties and taxes (if applicable).

All items are sold as is. All staff at IDEM are highly trained to ship safely and accurately. IDEM is not responsible for any items that are damaged or lost during transit. If the wrong item is ordered, the item can be returned or exchanged within 30 days if still in unused, new condition (including any packaging)—customer is responsible for all associated shipping and custom fees. If the error is on IDEM’s part, all efforts will be made to correct the error. Expedited order requests must be received by 12PM PST to guarantee same-day shipping (if items are in stock).

Shipping Address:

4814 E 2nd Street
Benicia, CA 94510

Mailing Address:

P.O. Box 304
Benicia, CA 94510

Business Hours:

Monday - Thursday
0800 - 1700 PST

Friday
0800 - 1600 PST

